



Hahn Produktkatalog

F Catalogue produits

GB Product catalogue





HAHN KT-RN



DESCRIPTION

The 2-piece Hahn KT-RN Rollenband for PVC doors uses the same fastening principle as its 3-piece counterpart, which allows it to be mounted with screws in the upstand and exhibits a very slender hinge curl of 22 mm. It also leaves the seal untouched, thus ensuring maintenance of the maximum insulation values. It can be adjusted very conveniently and with little efforts in six directions. Vertically and horizontally adjustable by one person. The sealing pressure of ± 0.5 mm can be adapted by turning the bushings. Presetting the bearing bushings during pre-assembly in the workshop ensures that the door can be installed and properly aligned. As a result, on-site adjustments can be dispensed with in many cases.

And it still supports doors weighing up to 120 kg depending on the door frame situation. CE classification according to EN 1935 hinge class 14 is currently in preparation. The door hinge, which is manufactured using extruded aluminium, is delivered for the most part factory-assembled. It can be used on either (left and right) side of the door without requiring any changes. With a standard version, the KT-RN accommodates all common profile variations with a right-angled upstand of 16.5 to 26.0 mm.

- Areas of application:
Doors made of PVC sections, suited for both residential and commercial structures
 - Main entrance doors
 - Interior doors
 - Side entrance doors
 - Exterior doors
 - Entrance doors for flats
- No break in the seal
- No misalignment even after adjustment
- Door hinges are largely pre-assembled



SYSTEM / APPLICATION

- Material: Constructed of extruded aluminium
- Fastening method: Directly mounted in frame and upstand
- Versions: Upstand ranges from 16.5 mm
- Load capacity: Max. 120 kg depending on the door/frame design
- Adjustability:
Adjustable in six directions
 - Horizontal adjustment, variable ± 3 mm
 - Height adjustment, variable $+3/-1$ mm
 - Adjustment of sealing pressure ± 0.5 mm
- Certifications:
 - CE-certified according to EN 1935:2002, hinge class 14
 - SKG 2-star
- Colours:
Hinges available in EV1 and RAL colours
- Allows door to open up 180°
- Usable DIN left / DIN right



ROLLENBAND FÜR HAUS- UND OBJEKTTÜREN

Paumelle cylindrique pour portes du domaine privé et mandaté



Butt hinges for residential and commercial doors

Bestell-Schlüssel / Art.-Nr. · Codes clés / No. d'article · Order key / item number

- 1** = EV1 schwarze Kunststoffteile / Pièces PVC noires / Black PVC parts
- G** = RAL 9016 weiße Kunststoffteile / Pièces PVC blanches / White PVC parts
- 6** = RAL 9016 schwarze Kunststoffteile / Pièces PVC noires / Black PVC parts
- 9** = Sonderfarbe schwarze Kunststoffteile / Teinte spéciale pièces PVC noires / Custom colours black PVC parts

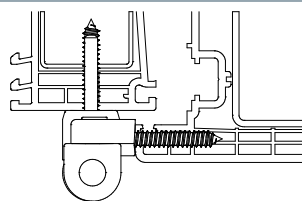
Bei Schlüsselziffer 9 bitte Sonderfarbe benennen. Beispiel: RAL 9005 Tiefschwarz.

Pour le code teinte 9, veuillez indiquer la teinte spéciale. Exemple : RAL 9005 noir foncé.

If you select No. 9, please indicate custom colour. Example: RAL 9005 jet black.

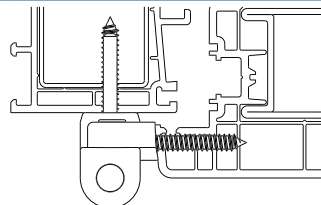
Verpackungseinheit: 1 Band im Karton / Unité d'emballage : 1 paumelle par boîte / Packaging unit: 1 hinge per box

Flügelanbindung 0°
Chant d'ouvrant 0°
Door connection 0°



 K721 0000

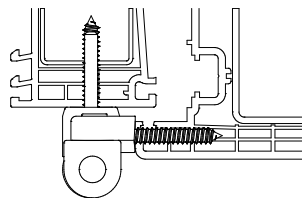
Flügelanbindung 5°
Chant d'ouvrant 5°
Door connection 5°




Art.-Nr. auf Anfrage
No. d'article sur demande
Item number on request

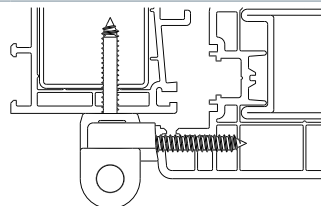
Verpackungseinheit: 24 Bänder im Karton / Unité d'emballage : 24 paumelles par boîte / Packaging unit: 24 hinges per box

Flügelanbindung 0°
Chant d'ouvrant 0°
Door connection 0°



 K721 V000

Flügelanbindung 5°
Chant d'ouvrant 5°
Door connection 5°



Art.-Nr. auf Anfrage
No. d'article sur demande
Item number on request



Direktverschraubung
Vissage direct
Direct screw connection

Technische Änderungen vorbehalten. Andere Farben auf Anfrage.
Sous réserve de modifications techniques. Autres teintes sur demande.
Right to alter technical details reserved. Other colours available on request.



ZUBEHÖR

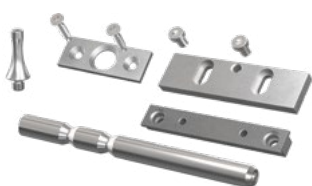
Accessoires
Accessoires



Zubehör/Artikel-Nr. · Accessoires/No. d'article · Accessories/Item number



Bohrlehre/Gabarit de perçage/Drilling jig
No. T319A0001



Sicherungs-Set KT-RN (Sicherungsblock, Lagerbolzen, Sicherungsdorn)/
Kit de sécurité KT-RN (Unité de sécurisation, axe, broche de blocage)/
Security set KT-RN (Security block, bearing pin, securing pin)
No. K760A0021 16 mm Beschlagnut/feuillure/hinge groove
No. K760A0022 24 / 4,0 mm Beschlagnut/feuillure/hinge groove



Bohrlehre für Sicherungs-Set KT-RN/
Gabarit pour kit de sécurité KT-RN/
Drilling jig for security set KT-RN
No. T300B0090



Steckbohrbuchse/Douille guide foret/Slip-type drill bush
Ø 5 mm, Ø 15 mm
No. A650A0040



Bohrlehre mit Steckbohrbuchse für Sicherungs-Set KT-RN/
Gabarit avec douille guide foret pour kit de sécurité KT-RN/
Drilling jig with slip-type drill bush for security set KT-RN
No. T311A0050



KT-Senkkopfschraube 6,3x80 für Rahmen/
Vis à tête fraisée 6,3x80 pour dormant/
Countersunk screw 6,3x80 for frame
No. K500E0007



Direktverschraubung
Vissage direct
Direct screw connection

Technische Änderungen vorbehalten. Andere Farben auf Anfrage.
Sous réserve de modifications techniques. Autres teintes sur demande.
Right to alter technical details reserved. Other colours available on request.

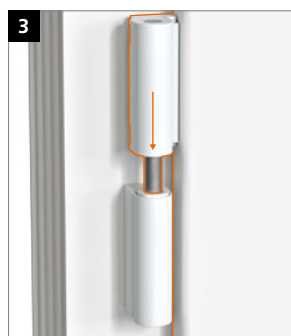
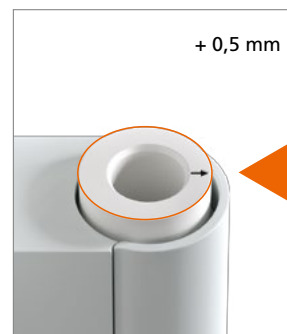
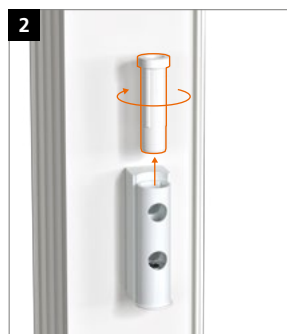
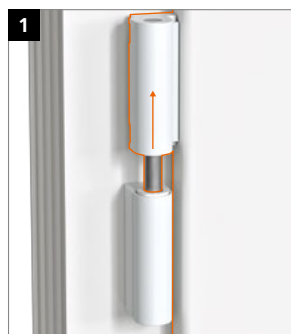
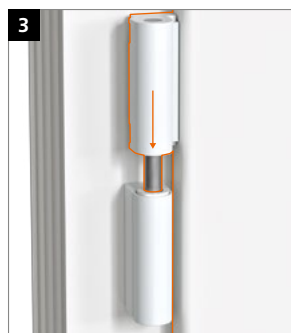
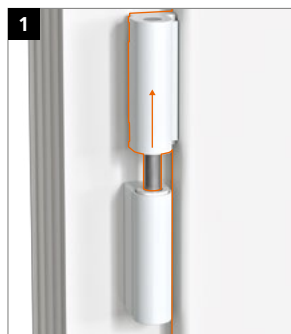
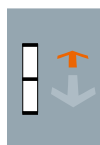


EINSTELLANLEITUNG

Notice de réglage
Adjustment instructions



Dichtungsandruckverstellung · Réglage de la compression du joint d'étanchéité · Adjusting the sealing pressure



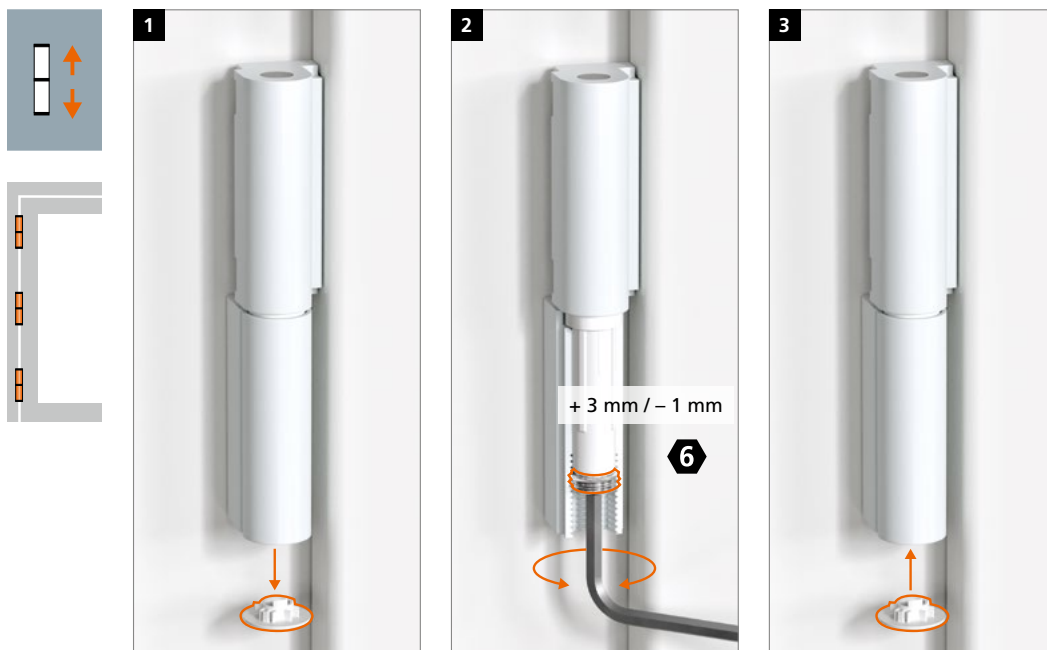


EINSTELLANLEITUNG

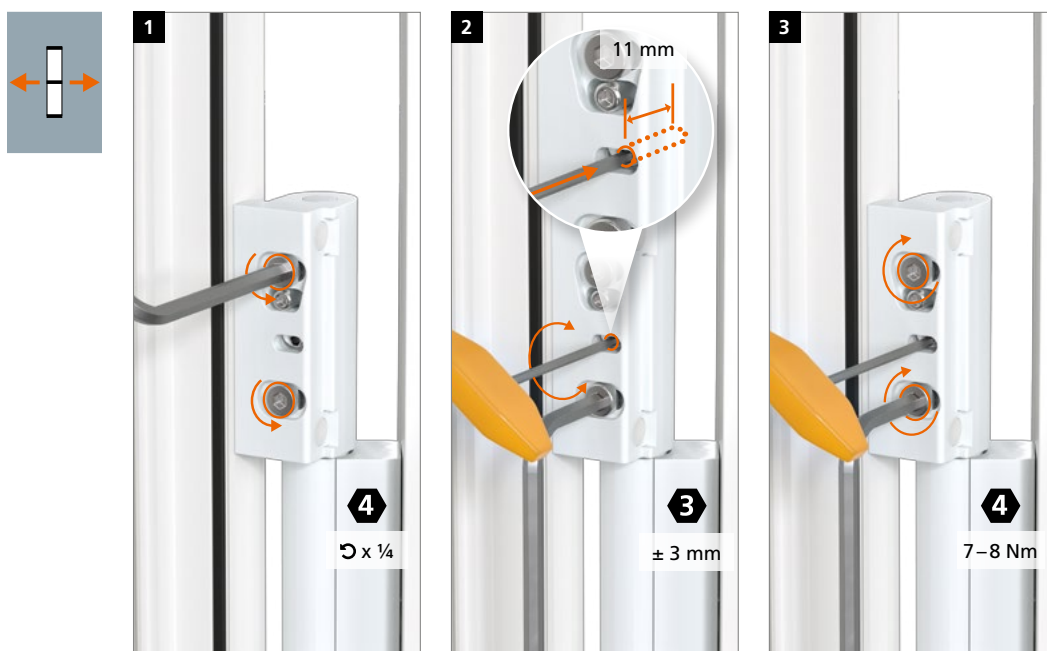
Notice de réglage
Adjustment instructions



Höhenverstellung · Réglage en hauteur · Adjusting the height



Horizontalverstellung · Réglage horizontal · Horizontal adjustment





Hahn Serie 60 AT



Hahn KT-EV



Hahn VL-Band ST



Hahn Rollenband G



Hahn KT-RV



*Für jede
Situation
die passende
Lösung*



Hahn KT-V 6R



Hahn VL-Band 180



Hahn Rollenband NG



Hahn KT-RN



Hahn Türband 4 AT



Hahn KT-Rollenband NL



Hahn KT-SV



Hahn KT-B 6R



Hahn Türband 4 AT



Hahn KT-N 6R



Hahn Türband 4 HM0



Hahn KT-RKN



Hahn KT-RV



Hahn KT-EN



Hahn Rollenband AT



Hahn Serie 60 AT



Hahn VL-Band AT



Hahn Klemmband



Hahn KT-RKV



Hahn Klemmband



Hahn AT-G



Hahn KT-RN

 **Dr. Hahn**[®]
TÜRBÄNDER. MADE IN GERMANY.



Dr. Hahn GmbH & Co. KG

Trompeterallee 162-170 · D-41189 Mönchengladbach
Postfach 400109 · D-41181 Mönchengladbach
Phone +49(0)2166 954-3 · E-Mail: sales@dr-hahn.com
www.dr-hahn.eu